



1. CORP
2. HIGH END RANGE
3. MARKETING OBJECTIVES
4. FINANCE PARTNOR
5. SIMPLE DEVELOPMENT
6. TRAINING PROGRAM



WRITEABLE SURFACES



Writeable



Magnetic



7 year warranty



Vertical Application



Moisture Resistant



Easy to clean



Stain Resistant



Fisher & Paykel Office designed by Custance

## For interactive surfaces that work

### Magnetic Writeable Laminate

Magnetic Laminate has a decorative face which can be written on and easily cleaned. Glossy White acts as a whiteboard while Matt Black is the perfect chalkboard. Both laminates have an embedded metal foil layer that ensures magnetic objects will hold strongly to the laminate surface. Suitable for vertical applications including schools or university classroom walls, office walls or partition surfacing, meeting and boardrooms, restaurant menu boards, children's bedroom feature walls and surfaces, design studios, island fronts and furniture.

### AR+® Solid Colours Laminate

AR+ Solid Colours is a 1.2mm high gloss laminate that delivers an exceptional flat gloss finish and depth of colour that is highly resistant to scuffs and abrasions. Suitable for use as a whiteboard, AR+ Solid Colours laminate allows you to add the wow factor with the practicality of an interactive, writeable surface. Suitable for horizontal and vertical surfaces, AR+ Solid colours can be used in all those applications listed above as well as tables and countertops.

	Colour Range	Finish	Sheet Size	Thickness	Magnetic
Formica® AR+® Solid Colours	Coloured	Gloss	3595 x 1395mm	1.2mm	No
Glossy White	White	Gloss	2440 x 1220mm 3050 x 1220mm	1mm	Yes
Matt Black	Black	Matt	3050 x 1220mm	1mm	Yes

Front: Formica® Magnetic Glossy White

# Magnetic Writeable Laminate



Glossy White (whiteboard)



Matt Black (chalkboard)

## AR+<sup>®</sup> Solid Colours Range



PREMIUM GLOSS FINISH



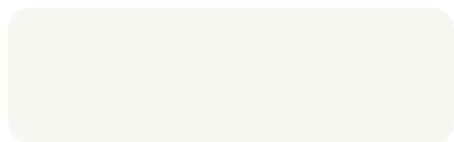
Crystal White



Juicy Pink



Chrome Yellow



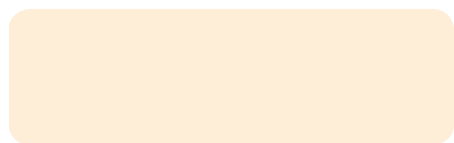
Alpino



Amarena



Levante



Antique White



Viola



Clementine



Pumice



Cassis



Carnaval



Kashmir



Maui



New Burgundy



Wasabi



Tropical Blue



Folkestone



Lime



Spectrum Blue



Sparta



Vibrant Green



Marine Blue



Storm

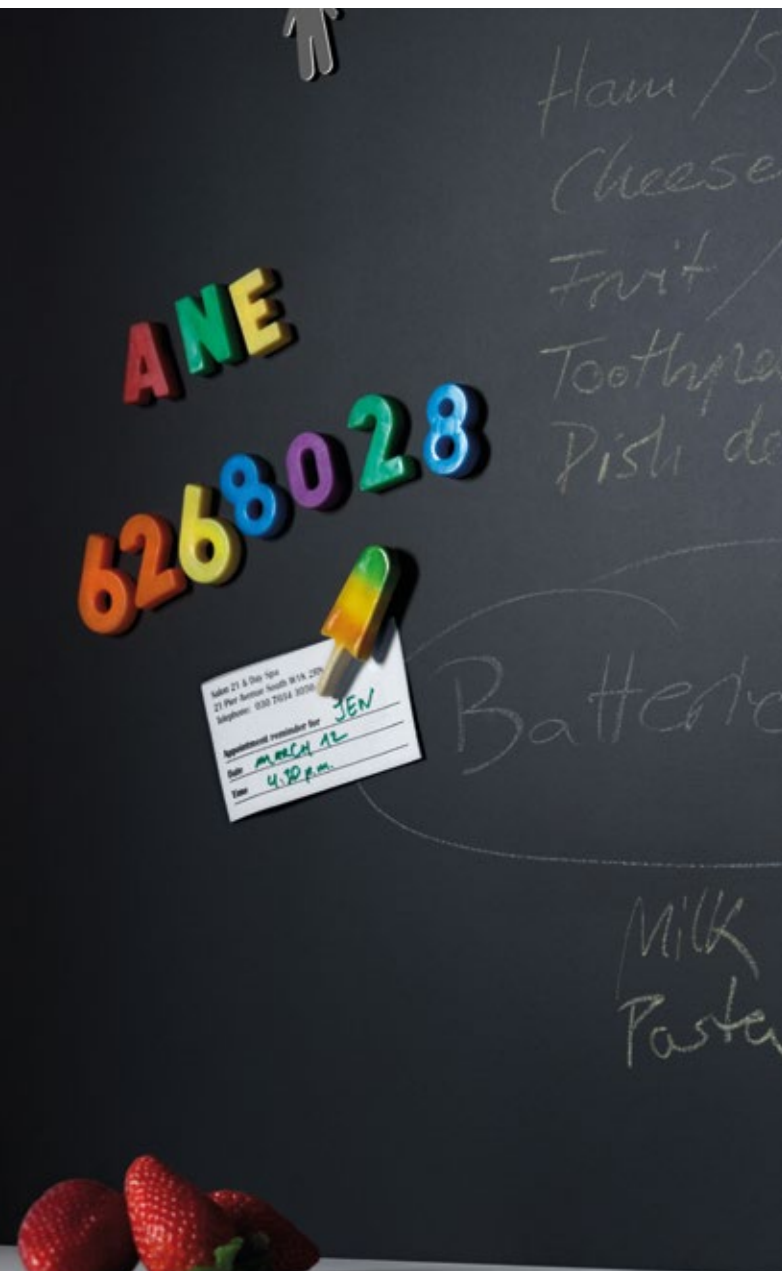


Monday - Jemma: dance

Weds - n... soccer



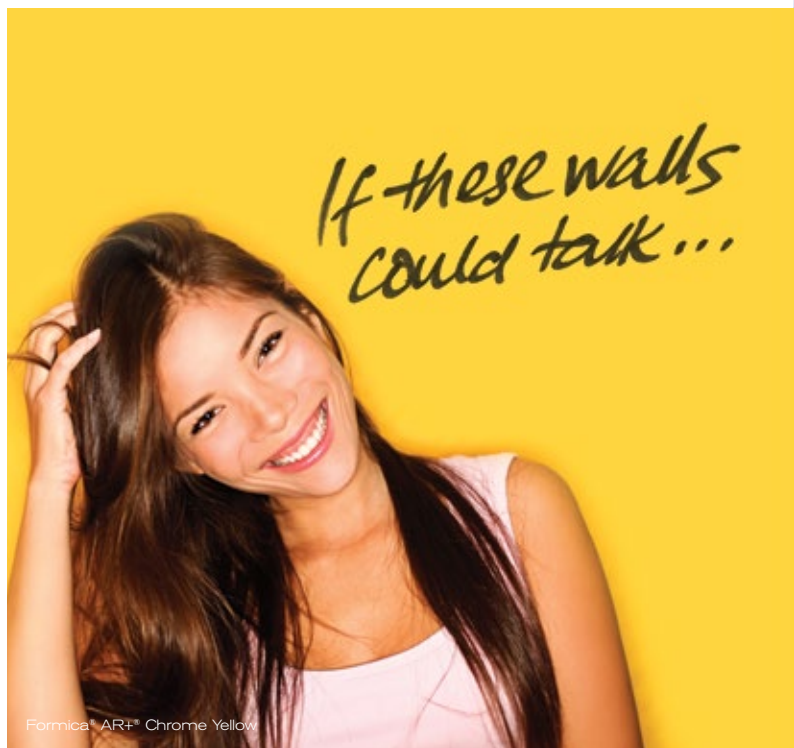
Formica® Glossy White



Apartment reserved for JEN  
Date: MARCH 12  
Time: 4:30 p.m.



Formica® Matt Black



If these walls could talk...

Formica® AR+® Chrome Yellow

For a free sample call **0800 99 99 39**

For more information visit **formica.co.nz** or call **0800 303 606**

Formica® is marketed and distributed by Laminex New Zealand, a division of FLETCHER BUILDING PRODUCTS LTD. The colours of the products featured within the imagery in this brochure are as close to the Formica range as photographic lighting and modern printing processes allow. The Formica range is no different than any other material in that darker colours semi-gloss and gloss surfaces will always show scratches and superficial wear and tear more readily than lighter colours. Formica surfaces should be protected from strong, direct sunlight as continuous exposure may cause discolouration or fading to the surface. Please obtain a copy of the terms and conditions of the Formica 7 year limited warranty from Formica.co.nz. This warranty is in addition to any rights that may exist under the Consumer Guarantees Act (1993).

© Copyright Reserved 2014, Laminex New Zealand. Formica® is marketed and distributed by Laminex New Zealand, a division of FLETCHER BUILDING PRODUCTS LTD. Formica is the registered trademark of Fletcher Building Holdings Ltd and used under licence by Laminex New Zealand, a division of Fletcher Building Products Ltd. Laminex New Zealand is a trademark used under licence by Laminex New Zealand, a division of Fletcher Building Products Ltd.

Brochure printed on  
9lives Ambassador satin  
FSC certified paper

TLG3313 12/14